

COMPARING TRAPVIEW AURA SC WITH DIFFERENT LIGHT BULB

Responsible person: Nika Gerželj, EFOS

Coordinator: Nika Gerželj, EFOS

Supervisor: Mateja Štefančič, EFOS

Purpose of experiment:

The aim of the trial is to compare efficiency of different light bulbs or combinations of light bulbs for monitoring *Ostrinia nubilalis*. There were three different types of AURA SC trap in trial, with two light bulbs: 15W at the top of funnel entrance and 4W under the observation table, those two bulbs lighted up alternately; AURA SC with 15W light bulb at the top of funnel entrance and AURA SC with 9W light bulb at the top of funnel entrance. With trial we want to find out which type of AURA SC attracts the highest number of pests.

1. TRIAL TECHNICAL INFORMATION

Monitored pest: *Ostrinia nubilalis*, European corn borer

Crop: maize

Type of traps in the experiment: Trapview AURA SC



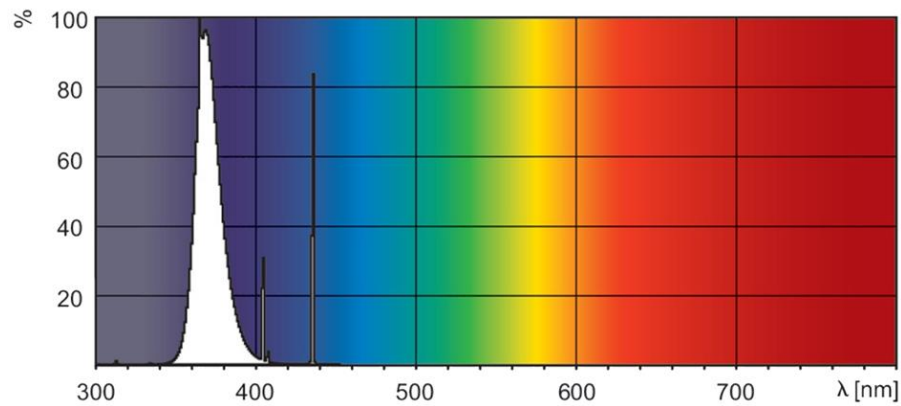
Serial numbers of Trapview traps: S11629, S11564, S11627, S11630, S11628, S12733, S12732, S12734, S12730, S12731, S12707, S12709, S12710, S012712, S12706

Lure(s): Philips ACTINIC BL TL 4W, Philips ACTINIC BL TL 15W, Philips ACTINIC BL PL-S 9W

Features:

- Emit long-wave UV-A radiation in the 350-400nm range
- UV-B/UV-A ratio less than 0.1% (UV-B 280-315nm)

- 100% Lead free
- Low mercury
- Wide power range



Distance between the traps: traps were placed between 50 and 100 m apart

2. TRIAL CONFIGURATION

Start of experiment: 14.6.2024

End of experiment: 30.9.2024

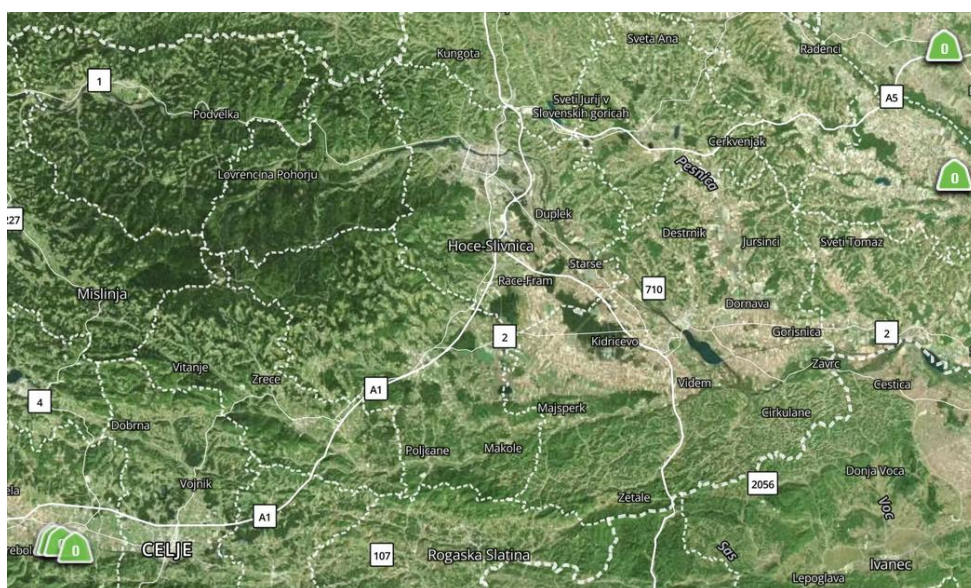
Location(s):

Cven: S11629, S12733, S12707

Rakičan: S11564, S12732, S12709

Žalec BOBEK: S11627, S12734, S12710

Jošt: S11630, S11628, S12730, S12731, S12712, S12706



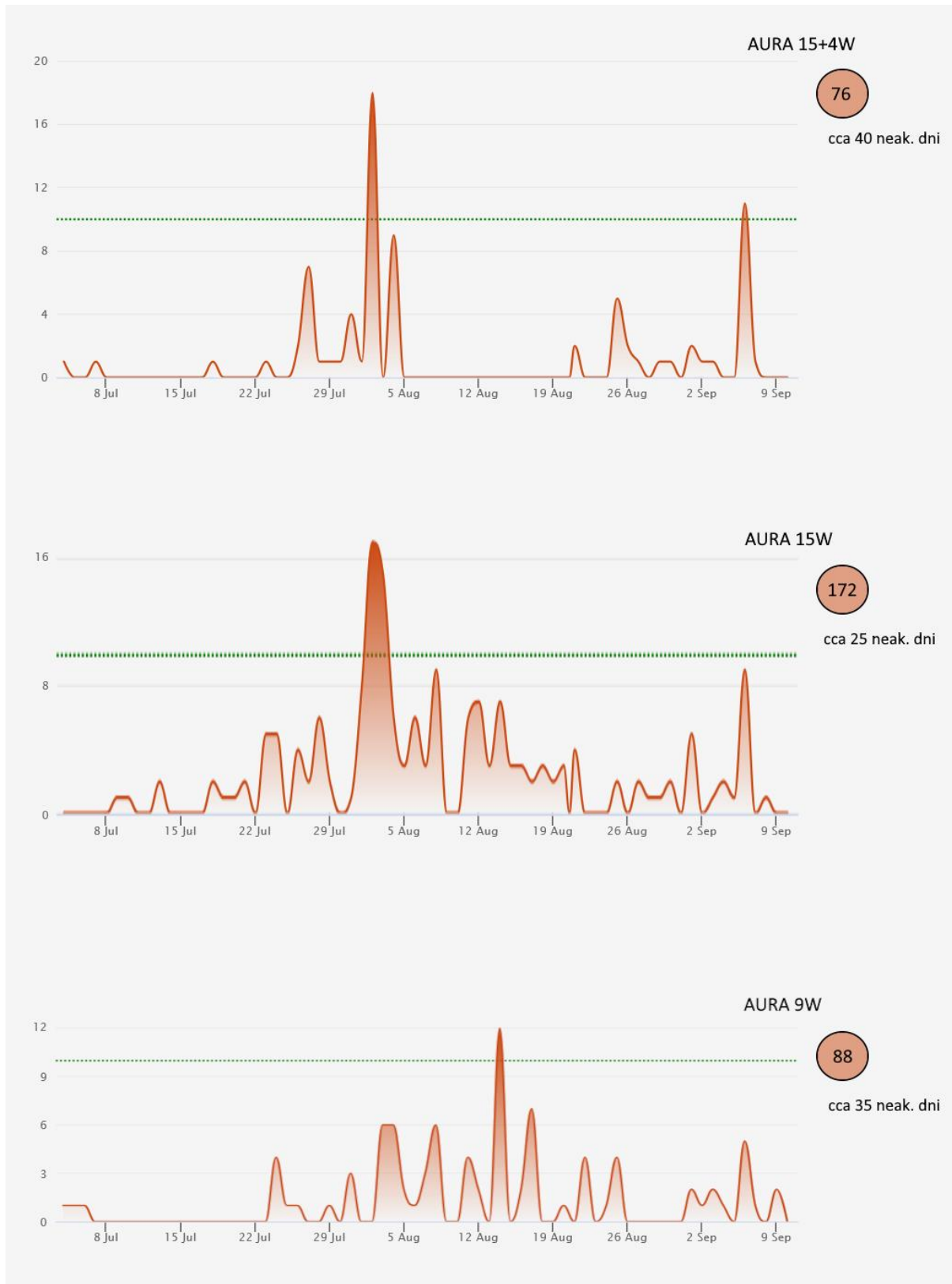
3. INTERMEDIATE TRIAL OBSERVATIONS

During the trial we have noticed quite some things that needs improvement. Funnel entrance should be redesigned, light bulb should stand between the sides of the entrance cross, also sides of the cross should not be perforated. Sticky roll did not rotate enough, until eventually it broke. We assume it is due to application of glue on the observation table. In some cases, dead pests accumulated on the bottom of the trap. There is a suspicious that lights did not work properly and were not lit every night.

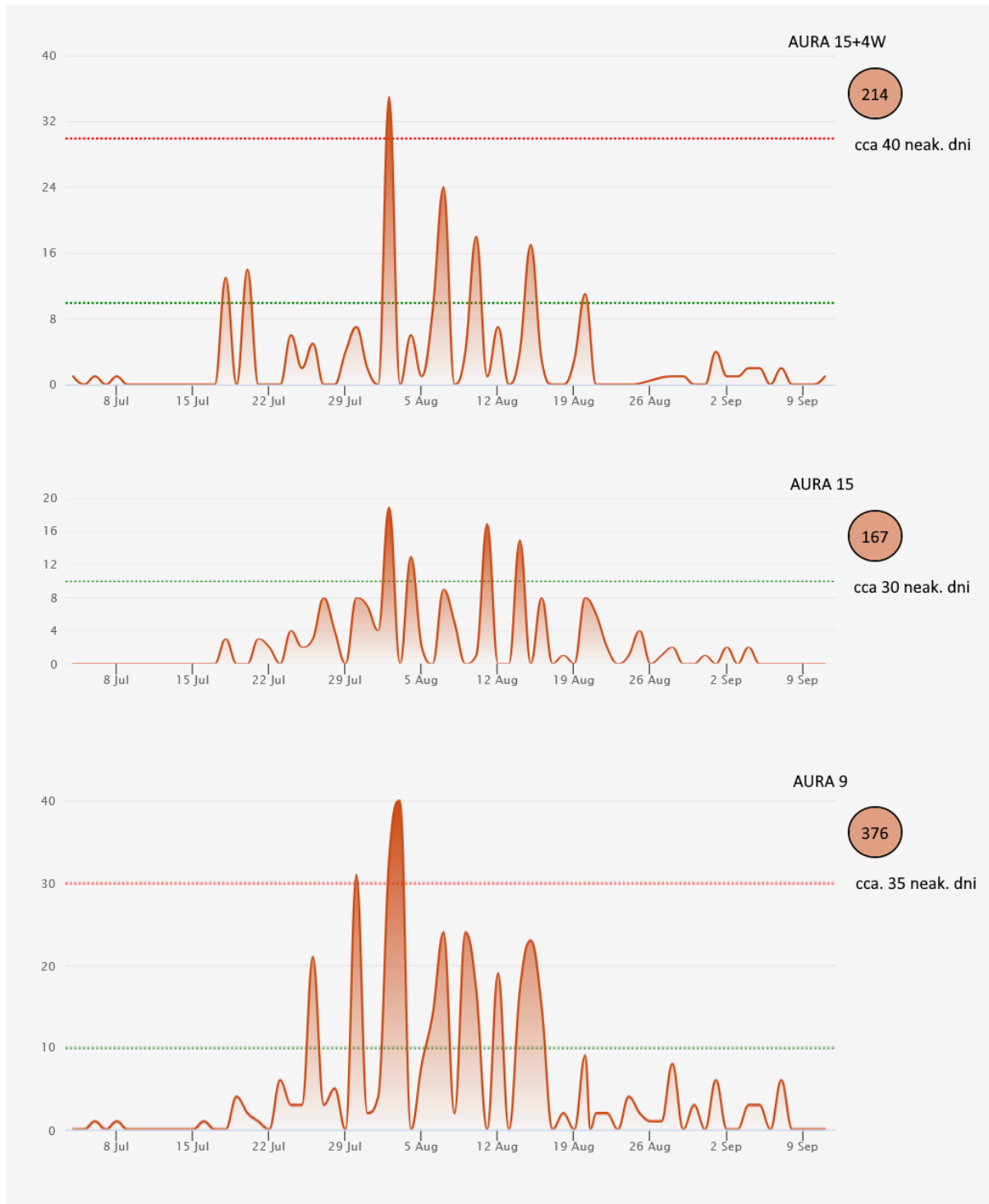
4. FINAL TRIAL CONCLUSIONS

Differences in catches between different types of traps were not significant and varies on different locations, mostly due to troubles that traps had and representation of pest population.

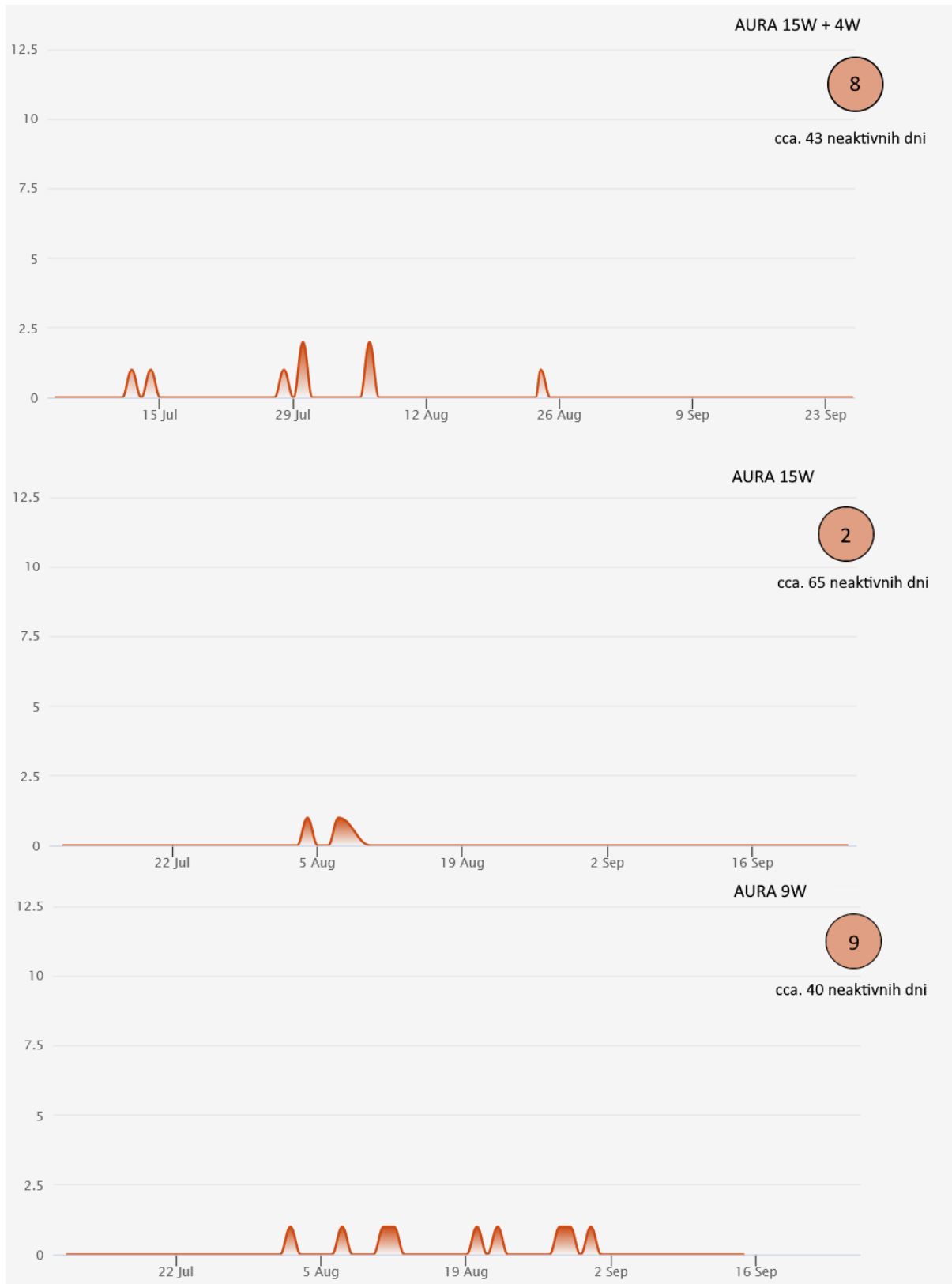
CVEN



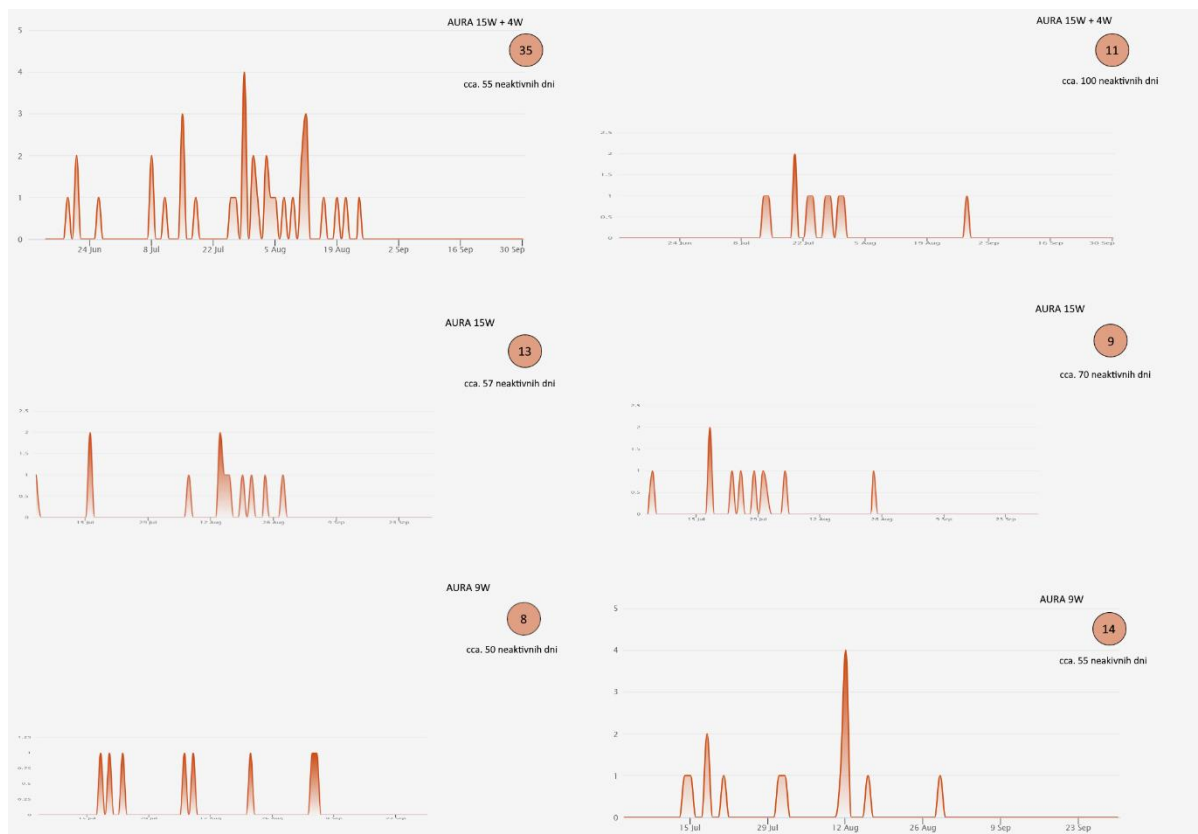
RAKIČAN



Žalec BOBEK



Roje pri Žalcu JOŠT



ACCUMULATED PEST PRESSURE			
Location	AURA 15W + 4W	AURA 15W	AURA 9W
Cven	76	172	88
Rakičan	214	167	376
Bobek	8	2	9
Jošt	35	13	8
	11	9	14